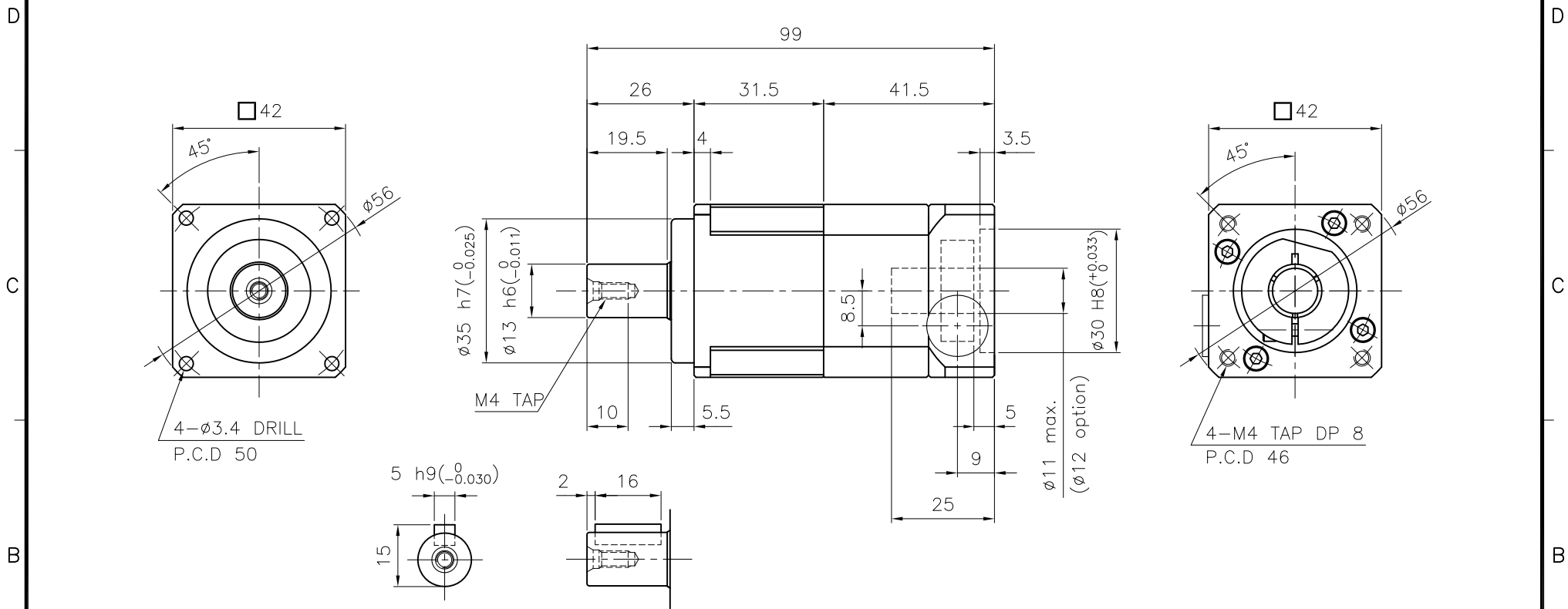


6 5 4 3 2 1

MARK	DATE	REVISION	REASON	SIGNATURE
------	------	----------	--------	-----------



SPECIFICATION

Output Shaft of Key Type (S2-Option)

- 1.Reducer Stage : 1
- 2.Ratio : 1/3~1/10
- 3.Output Shaft Shape : Non-Key Type (S1)
Key Type (S2)
- 4.Backlash
 - 4-1) Precision Backlash P1(≤3 arcmin)
 - 4-2) Low Backlash P2(≤5 arcmin)
 - 4-3) Standard Backlash P3(≤8 arcmin)
- 5.Input Shaft Dia. : 11 max. (12 option)
In case that motor shaft Dia. is smaller than 11
Bushing is supplied

GENERAL TOLERANCE (mm)	SURFACE ROUGHNESS	-		NP-042	φ56x99	-	1		
0.5~3 ±0.1	Ra Rmax	FINISH MARK	NO.	DESCRIPTIONS	SIZE	MAT'L	Q'TY	WEIGHT (kgf)	REMARKS
3~6 ±0.1	✓	~	CUSTOMER	STANDARD			1 / 1	PROJECTION	☉
6~30 ±0.2	12.5	50S	TITLE	NP-042(1/3~1/10)		DWG.NO.	NP04200A1-042A	REV. NO.	0
30~120 ±0.3	6.3	25S	Precision Planetary Gearhead		REF.NO.				
120~400 ±0.5	3.2	12.5S	DRAWN	CHECKED	APPROVED				
400~1000 ±0.8	1.6	6.3S	S.R.JEON						
1000~2000 ±1.2	0.8	3.2S	2018.07.23						
2000~4000 ±2	0.4	0.4S							

6 5 4 3 2 1