

6

5

4

3

2

1

DWG. NO.

MARK

DATE

REVISION

REASON

SIGNATURE

D

D

C

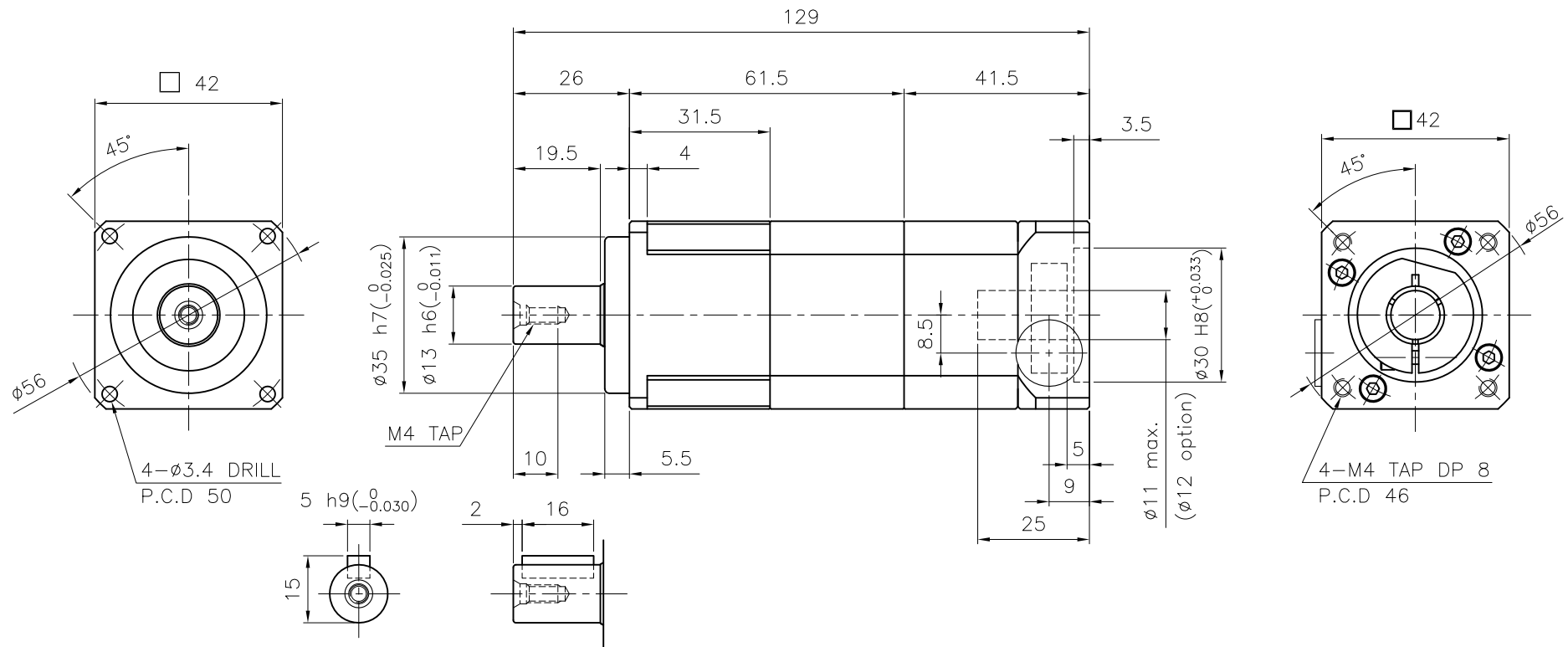
C

B

B

A

A



SPECIFICATION

Output Shaft of Key Type (S2-Option)

- 1.Reducer Stage : 2
- 2.Ratio : 1/15~1/100
- 3.Output Shaft Shape : Non-Key Type (S1)
Key Type (S2)
- 4.Backlash
 - 4-1) Precision Backlash P1(≤5 arcmin)
 - 4-2) Low Backlash P2(≤7 arcmin)
 - 4-3) Standard Backlash P3(≤10 arcmin)
- 5.Input Shaft Dia. : $\phi 11$ max. ($\phi 12$ option)
Bushing is supplied

GENERAL TOLERANCE (mm)	SURFACE ROUGHNESS		FINISH MARK		NO.		DESCRIPTIONS		SIZE	MAT'L	Q'TY	WEIGHT (kgf)	REMARKS
0.5~3	±0.1	Ra	Rmax	▽	1	NP-042	φ56x129	-	1				
3~6	±0.1	▽	▽	100S	CUSTOMER	STANDARD		SCALE	1 / 1	PROJECTION			
6~30	±0.2	▽	▽	12.5	TITLE	NP-042(1/15~1/100)		DWG.NO.	NP04200A2-042A	REV. NO.	0		
30~120	±0.3	▽	▽	25S	Precision Planetary Gearhead		REF.NO.						
120~400	±0.5	▽	▽	12.5S	DRAWN	CHECKED	APPROVED						
400~1000	±0.8	▽	▽	6.3S	S.R.JEON								
1000~2000	±1.2	▽	▽	3.2S	2018.07.23								
2000~4000	±2	▽	▽	0.8S									
		▽	▽	0.4S									

NARA DRIVE