

6

5

4

3

2

1

DWG. NO.

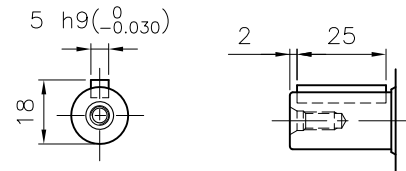
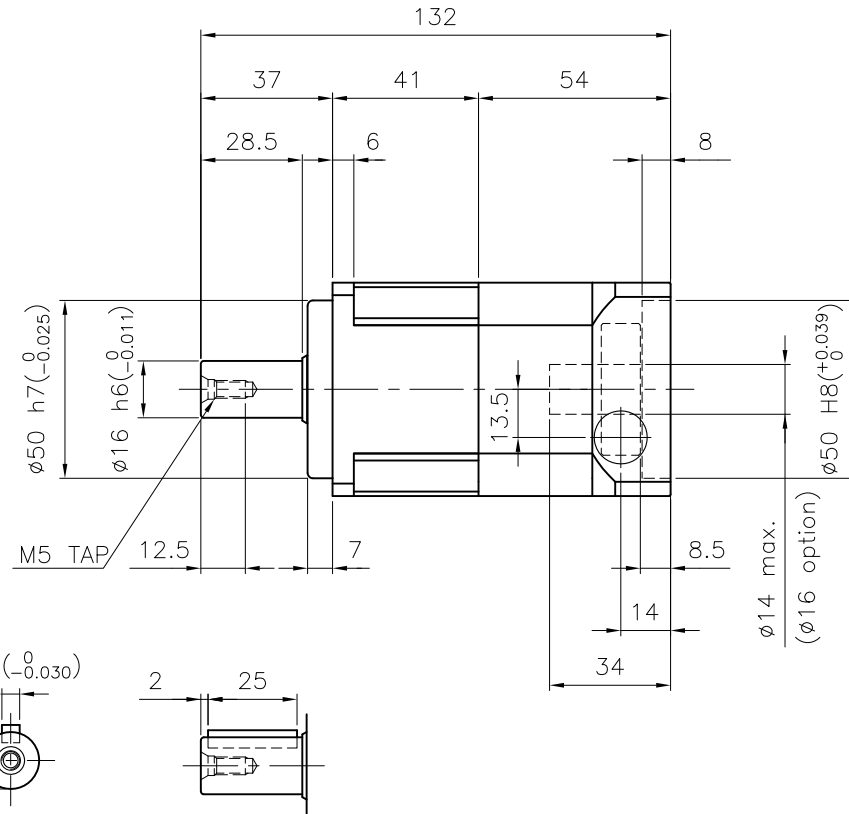
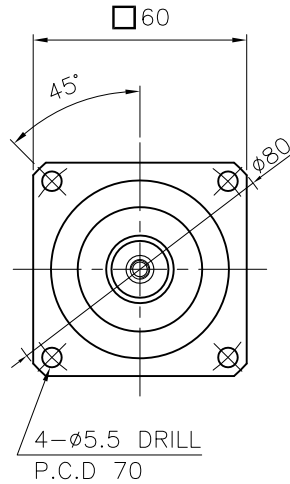
MARK	DATE	REVISION	REASON	SIGNATURE

D

C

B

A



Output Shaft of Key Type (S2-Option)

SPECIFICATION

- Reducer Stage : 1
- Ratio : 1/3~1/10
- Output Shaft Shape : Non-Key Type (S1)
Key Type (S2)
- Backlash
 - Precision Backlash P1(≤ 3 arcmin)
 - Low Backlash P2(≤ 5 arcmin)
 - Standard Backlash P3(≤ 8 arcmin)
- Input Shaft Dia. : $\phi 14$ max. ($\phi 16$ option)
In case that motor shaft Dia. is smaller than $\phi 14$
Bushing is supplied

GENERAL TOLERANCE (mm)	SURFACE ROUGHNESS		FINISH MARK		CUSTOMER		STANDARD		SCALE		PROJECTION		REMARKS	
0.5~3	± 0.1	Ra	Rmax	~	NO.	DESCRIPTIONS	SIZE	MAT'L	Q'TY	WEIGHT (kgf)	1 / 1.5			
3~6	± 0.1	$\sqrt{}$	$\sqrt{}$	\sim	CUSTOMER		STANDARD		SCALE		1 / 1.5		PROJECTION	
6~30	± 0.2	$\sqrt{}$	$\sqrt{}$	\sim	TITLE		NP-060(1/3~1/10) Precision Planetary Gearhead		DWG.NO.		NP06000A1-060A		REV. NO.	
30~120	± 0.3	$\sqrt{}$	$\sqrt{}$	\sim	DRAWN		CHECKED		APPROVED		REF.NO.		O	
120~400	± 0.5	$\sqrt{}$	$\sqrt{}$	\sim	S.R.JEON									
400~1000	± 0.8	$\sqrt{}$	$\sqrt{}$	\sim	2018.07.23									
1000~2000	± 1.2	$\sqrt{}$	$\sqrt{}$	\sim										
2000~4000	± 2	$\sqrt{}$	$\sqrt{}$	\sim										

NARA DRIVE

6

5

4

3

2

1