

6

5

4

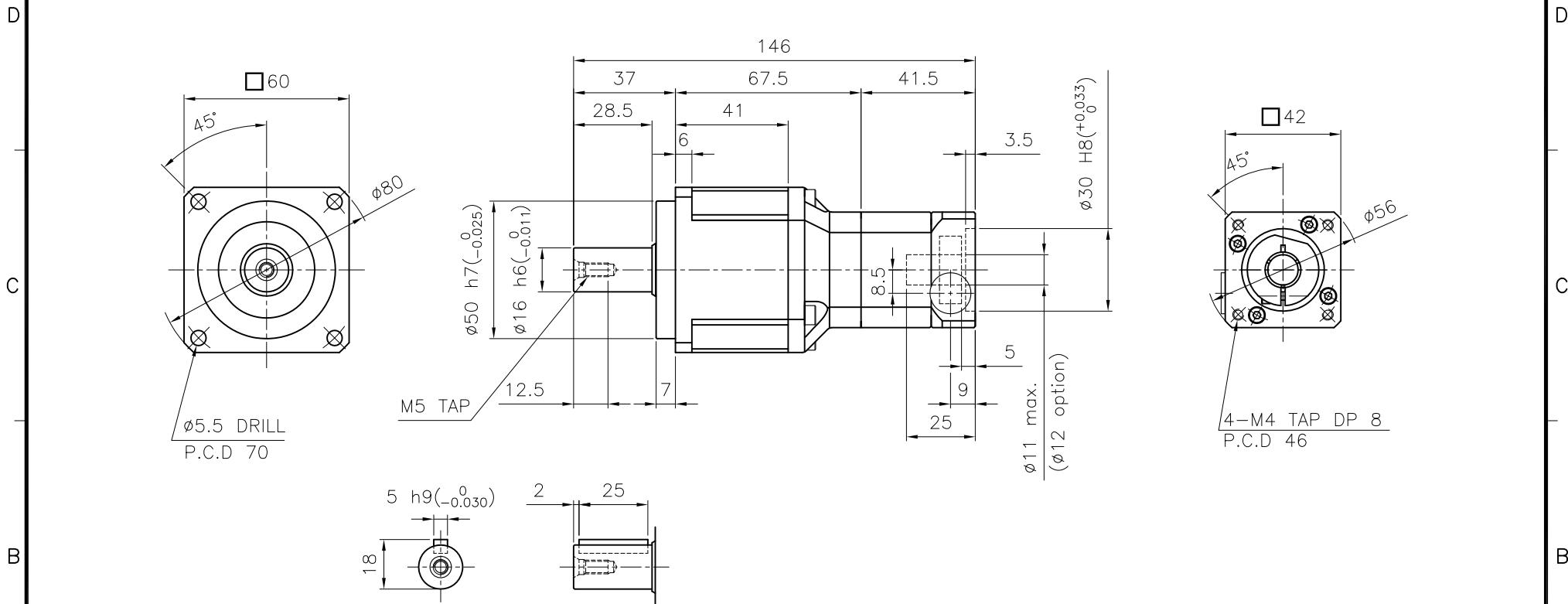
3

2

1

DWG. NO.

MARK	DATE	REVISION	REASON	SIGNATURE



SPECIFICATION

Output Shaft of Key Type (S2-Option)

- Reducer Stage : 2
- Ratio : 1/15~1/100
- Output Shaft Shape : Non-Key Type (S1)
Key Type (S2)
- Backlash
 - 1) Precision Backlash P1(≤5 arcmin)
 - 2) Low Backlash P2(≤7 arcmin)
 - 3) Standard Backlash P3(≤10 arcmin)
- Input Shaft Dia. : ø11 max. (ø12 option)
In case that motor shaft Dia. is smaller than ø11
Bushing is supplied

GENERAL TOLERANCE (mm)	SURFACE ROUGHNESS		FINISH MARK		NO.		DESCRIPTIONS		SIZE		MAT'L		Q'TY		WEIGHT (kgf)		REMARKS	
0.5~3	±0.1	Ra	Rmax	~														
3~6	±0.1																	
6~30	±0.2																	
30~120	±0.3																	
120~400	±0.5																	
400~1000	±0.8																	
1000~2000	±1.2																	
2000~4000	±2																	

CUSTOMER	STANDARD	SCALE	1 / 1.5	PROJECTION	

TITLE	DWG.NO.	REF.NO.	REV. NO.
NP-060(1/15~1/100) Precision Planetary Gearhead	NP06000A2-042A		0

DRAWN	CHECKED	APPROVED
S.R.JEON		

2018.07.23

NARA DRIVE

6

5

4

3

2

1