

6

5

4

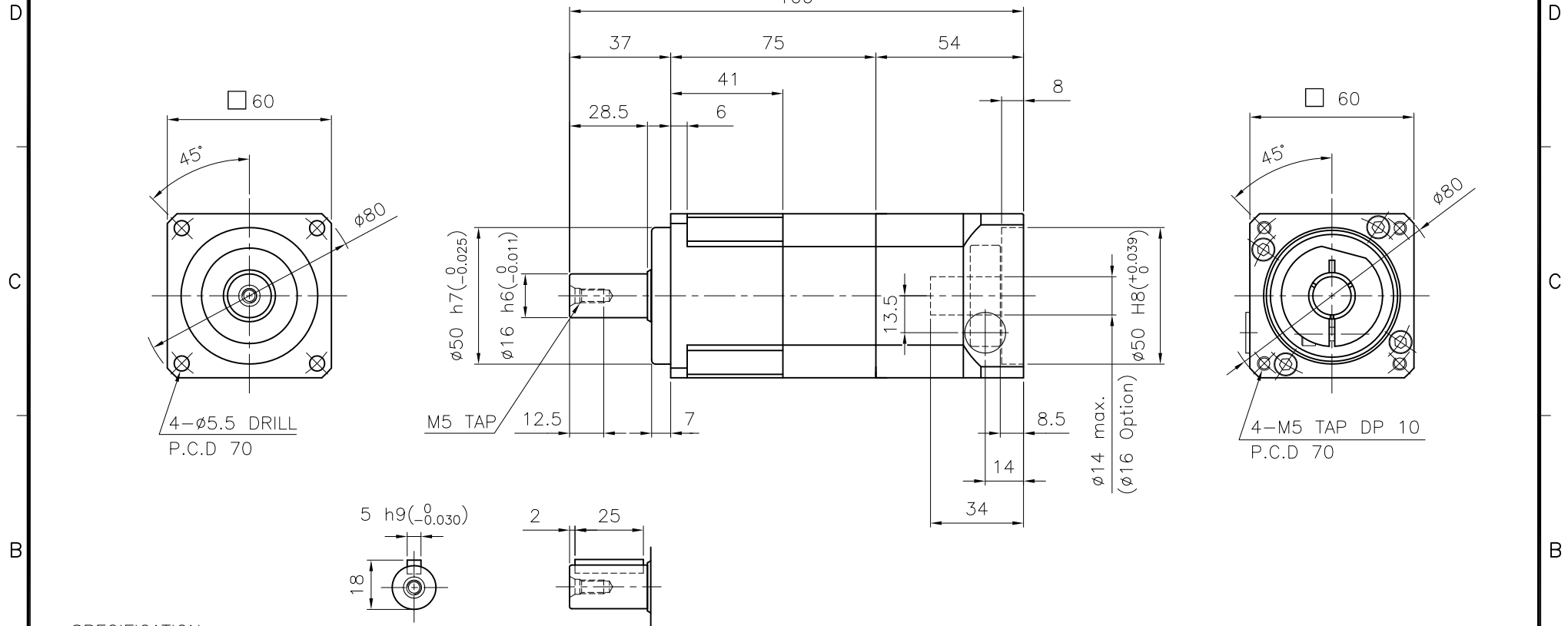
3

2

1

DWG. NO.

MARK	DATE	REVISION	REASON	SIGNATURE



### SPECIFICATION

### Output Shaft of Key Type (S2-Option)

- Reducer Stage : 2
- Ratio : 1/15~1/100
- Output Shaft Shape : Non-Key Type (S1)  
Key Type (S2)
- Backlash
  - Precision Backlash  $P1(\leq 5 \text{ arcmin})$
  - Low Backlash  $P2(\leq 7 \text{ arcmin})$
  - Standard Backlash  $P3(\leq 10 \text{ arcmin})$
- Input Shaft Dia. :  $\phi 14 \text{ max.}$  ( $\phi 16$  option)  
In case that motor shaft Dia. is smaller than  $\phi 14$   
Bushing is supplied

GENERAL TOLERANCE (mm)	SURFACE ROUGHNESS		FINISH MARK		NO.		DESCRIPTIONS		SIZE	MAT'L	Q'TY	WEIGHT (kgf)	REMARKS
0.5~3	$\pm 0.1$	Ra	Rmax	~	-	NP-060A	$\phi 80 \times 166$	-	1	-	-	-	-
3~6	$\pm 0.1$	$\sqrt{\text{Ra}}$	$\sqrt{\text{Rmax}}$	$\sim$	CUSTOMER	STANDARD	SCALE	1 / 1.5	PROJECTION	$\text{---}$	$\text{---}$	-	-
6~30	$\pm 0.2$	$\sqrt{\text{Ra}}$	$\sqrt{\text{Rmax}}$	$\sim$	TITLE	NP-060A(1/15~1/100) Precision Planetary Gearhead	DWG.NO.	NP060A00A2-060A	REV. NO.	0	-	-	-
30~120	$\pm 0.3$	$\sqrt{\text{Ra}}$	$\sqrt{\text{Rmax}}$	$\sim$	DRAWN	S.R. JEON	CHECKED	-	APPROVED	-	-	-	-
120~400	$\pm 0.5$	$\sqrt{\text{Ra}}$	$\sqrt{\text{Rmax}}$	$\sim$	2018.07.24	-	-	-	-	-	-	-	-
400~1000	$\pm 0.8$	$\sqrt{\text{Ra}}$	$\sqrt{\text{Rmax}}$	$\sim$	NARADrive								
1000~2000	$\pm 1.2$	$\sqrt{\text{Ra}}$	$\sqrt{\text{Rmax}}$	$\sim$									
2000~4000	$\pm 2$	$\sqrt{\text{Ra}}$	$\sqrt{\text{Rmax}}$	$\sim$									

6

5

4

3

2

1