

6

5

4

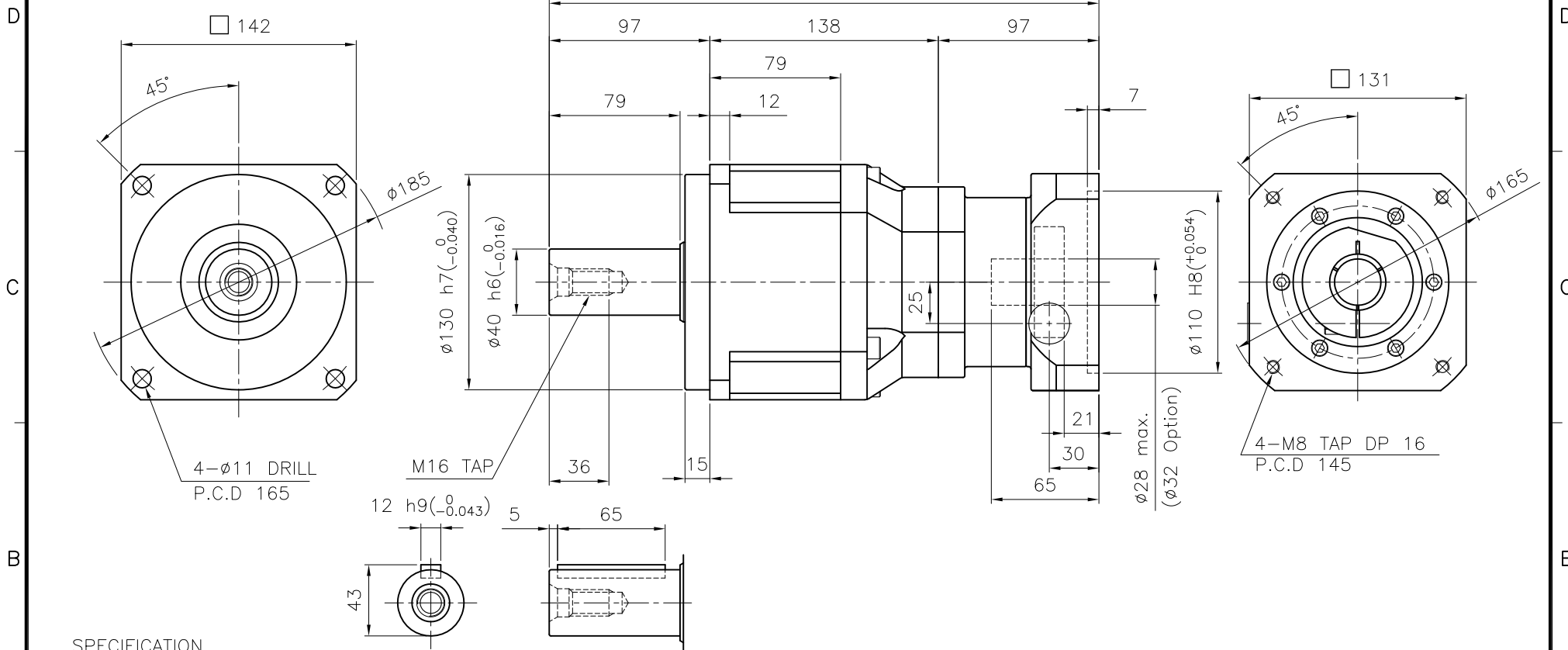
3

2

1

DWG. NO.

MARK	DATE	REVISION	REASON	SIGNATURE
------	------	----------	--------	-----------



SPECIFICATION

Output Shaft of Key Type (S2-Option)

- 1.Reducer Stage : 2
- 2.Ratio : 1/15~1/100
- 3.Output Shaft Shape : Non-Key Type (S1)
Key Type (S2)
- 4.Backlash
 - 4-1) Precision Backlash P1(≤5 arcmin)
 - 4-2) Low Backlash P2(≤7 arcmin)
 - 4-3) Standard Backlash P3(≤10 arcmin)
- 5.Input Shaft Dia. : φ28 max. (φ32 option)
In case that motor shaft Dia. is smaller than φ28
Bushing is supplied

GENERAL TOLERANCE (mm)	SURFACE ROUGHNESS	- NP-142		φ185x332	-	1		
0.5~3 ±0.1	Ra Rmax FINISH MARK	NO.	DESCRIPTIONS	SIZE	MAT'L	Q'TY	WEIGHT (kgf)	REMARKS
3~6 ±0.1	✓	CUSTOMER	STANDARD	SCALE	1 / 2.5	PROJECTION		
6~30 ±0.2	100S	TITLE	NP-142(1/15~1/100)	DWG.NO.	NP14200A2-130A	REV. NO.	0	
30~120 ±0.3	50S	DRAWN		CHECKED	APPROVED			
6~30 ±0.2	12S	S.R.JEON		2018.08.11				
120~400 ±0.5	25S							
120~400 ±0.5	12.5S							
400~1000 ±0.8	6.3S							
400~1000 ±0.8	3.2S							
1000~2000 ±1.2	0.8S							
2000~4000 ±2	0.4S							