

6

5

4

3

2

1

DWG. NO.

MARK	DATE	REVISION	REASON	SIGNATURE

D

D

C

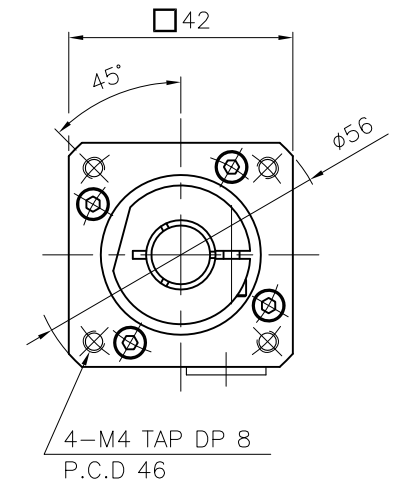
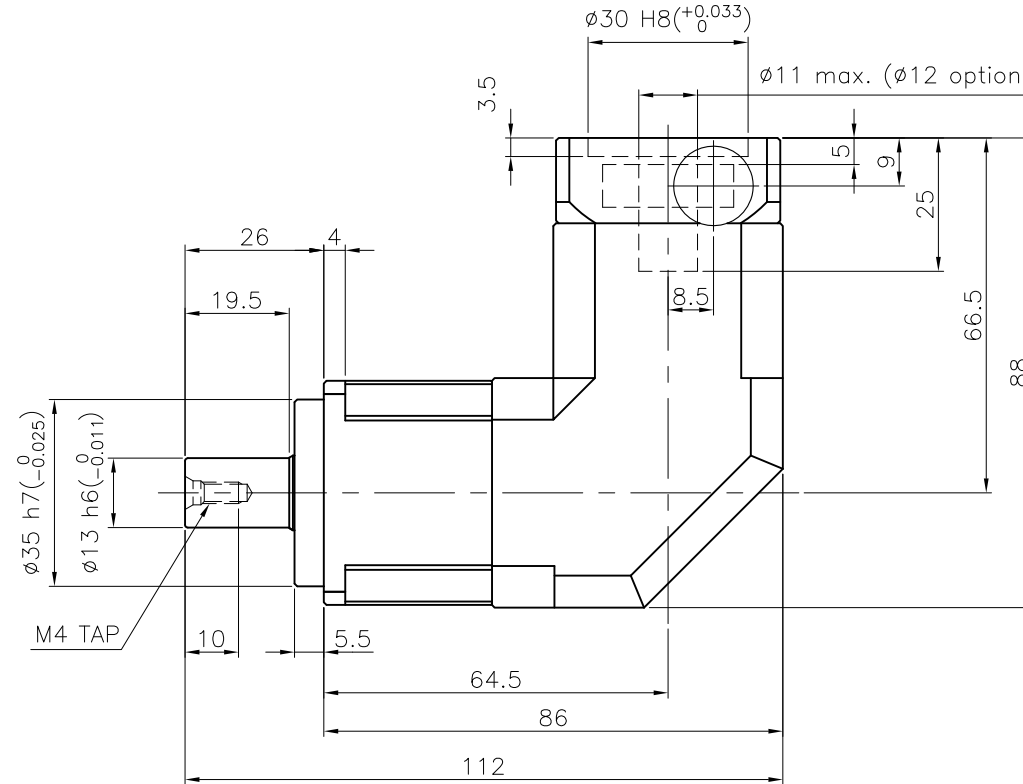
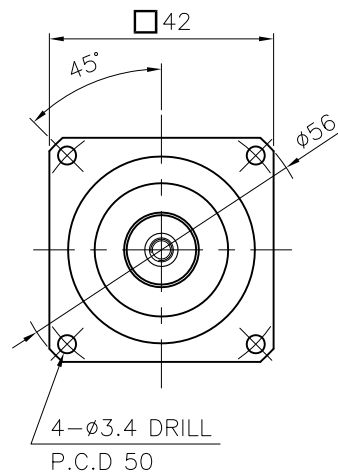
C

B

B

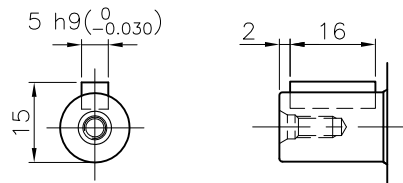
A

A



SPECIFICATION

- 1.Reducer Stage : 1
- 2.Ratio : 1/3~1/20
- 3.Output Shaft Shape : Non-Key Type (S1)
Key Type (S2)
- 4.Backlash
 - 4-1) Precision Backlash P1(\leq 4 arcmin)
 - 4-2) Low Backlash P2(\leq 6 arcmin)
 - 4-3) Standard Backlash P3(\leq 10 arcmin)
- 5.Input Shaft Dia. : ϕ 11 max. (ϕ 12 option)
In case that motor shaft Dia. is smaller than ϕ 11
Bushing is supplied



Output Shaft of Key Type (S2-Option)

GENERAL TOLERANCE (mm)	SURFACE ROUGHNESS		FINISH MARK		NPR - 042		ϕ 56x112x88		-		1		REMARKS	
0.5~3	\pm 0.1	Ra	Rmax	~	NO.	DESCRIPTIONS	SIZE	MAT'L	Q'TY	WEIGHT (kgf)	SCALE	1 / 1	PROJECTION	
3~6	\pm 0.1	$\sqrt{\text{Ra}}$			CUSTOMER	-								
6~30	\pm 0.2	$\sqrt{\text{Ra}}$			TITLE	NPR-042(1/3~1/20)					DWG.NO.	NPR04200A1-042A	REV. NO.	0
30~120	\pm 0.3	$\sqrt{\text{Ra}}$			Precision Planetary Gearhead						REF.NO.			
120~400	\pm 0.5	$\sqrt{\text{Ra}}$			DRAWN	CHECKED	APPROVED							
400~1000	\pm 0.8	$\sqrt{\text{Ra}}$			S.R.JEON									
1000~2000	\pm 1.2	$\sqrt{\text{Ra}}$			2018.08.12									
2000~4000	\pm 2	$\sqrt{\text{Ra}}$												

6

5

4

3

2

1