

6

5

4

3

2

1

DWG. NO.

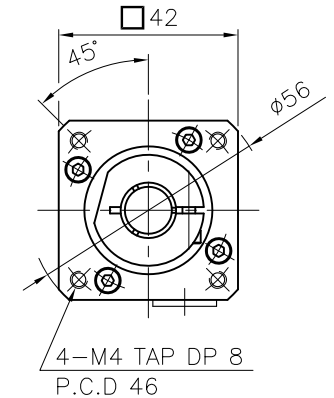
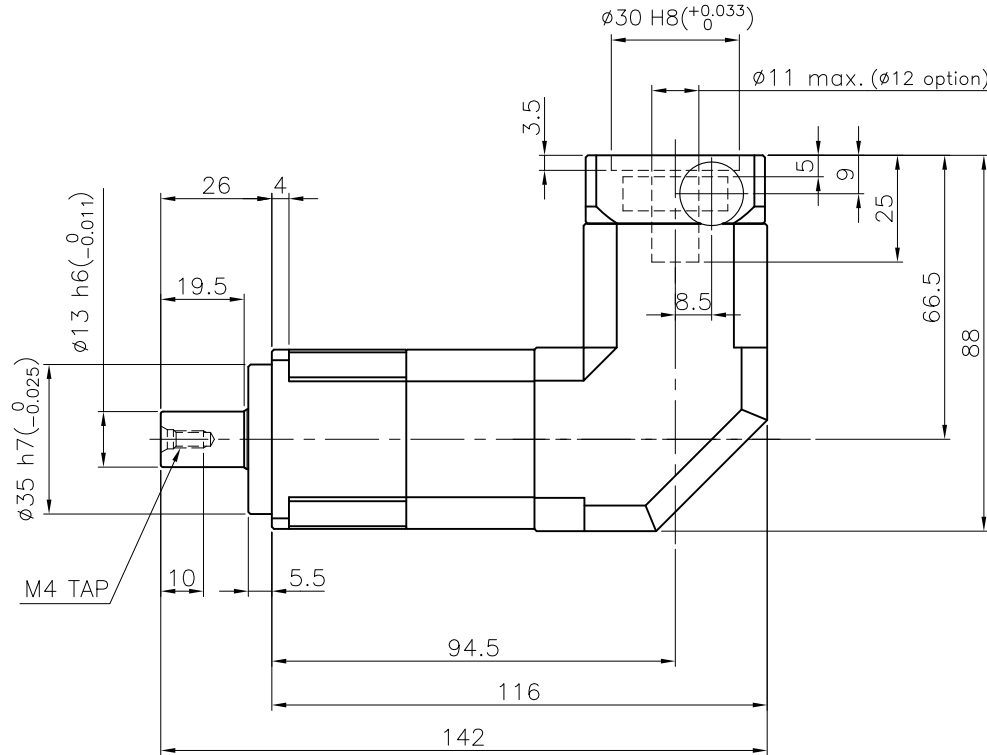
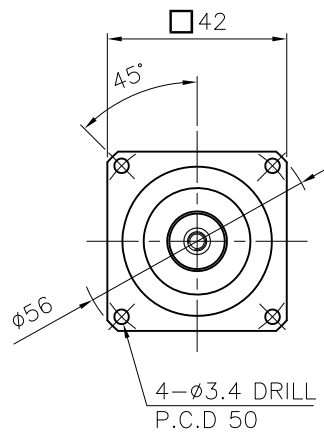
MARK	DATE	REVISION	REASON	SIGNATURE
------	------	----------	--------	-----------

D

C

B

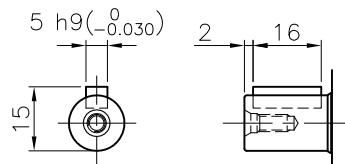
A



VIEW-A

SPECIFICATION

- 1.Reducer Stage : 2
- 2.Ratio : 1/25~1/200
- 3.Output Shaft Shape : Non-Key Type (S1)
Key Type (S2)
- 4.Backlash
 - 4-1) Precision Backlash P1(≤7 arcmin)
 - 4-2) Low Backlash P2(≤9 arcmin)
 - 4-3) Standard Backlash P3(≤12 arcmin)
- 5.Input Shaft Dia. : $\phi 11$ max. ($\phi 12$ option)
In case that motor shaft Dia. is smaller than $\phi 11$
Bushing is supplied



Output Shaft of Key Type (S2-Option)

GENERAL TOLERANCE (mm)	SURFACE ROUGHNESS	FINISH MARK	NPR - 042		$\phi 56 \times 142 \times 88$		1		REMARKS	
0.5~3	±0.1	Ra	NO.	DESCRIPTIONS	SIZE	MAT'L	Q'TY	WEIGHT (kgf)		
3~6	±0.1	Rmax	CUSTOMER		SCALE	1 / 1.25	PROJECTION			
6~30	±0.2	12.5	TITLE		NPR-042(1/25~1/200)	DWG.NO.	NPR04200A2-042A		REV. NO.	
30~120	±0.3	6.3	DRAWN		S.R.JEON	CHECKED	APPROVED		O	
120~400	±0.5	3.2	2018.08.12							
400~1000	±0.8	1.6								
1000~2000	±1.2	0.8								
2000~4000	±2	0.4								



6

5

4

3

2

1