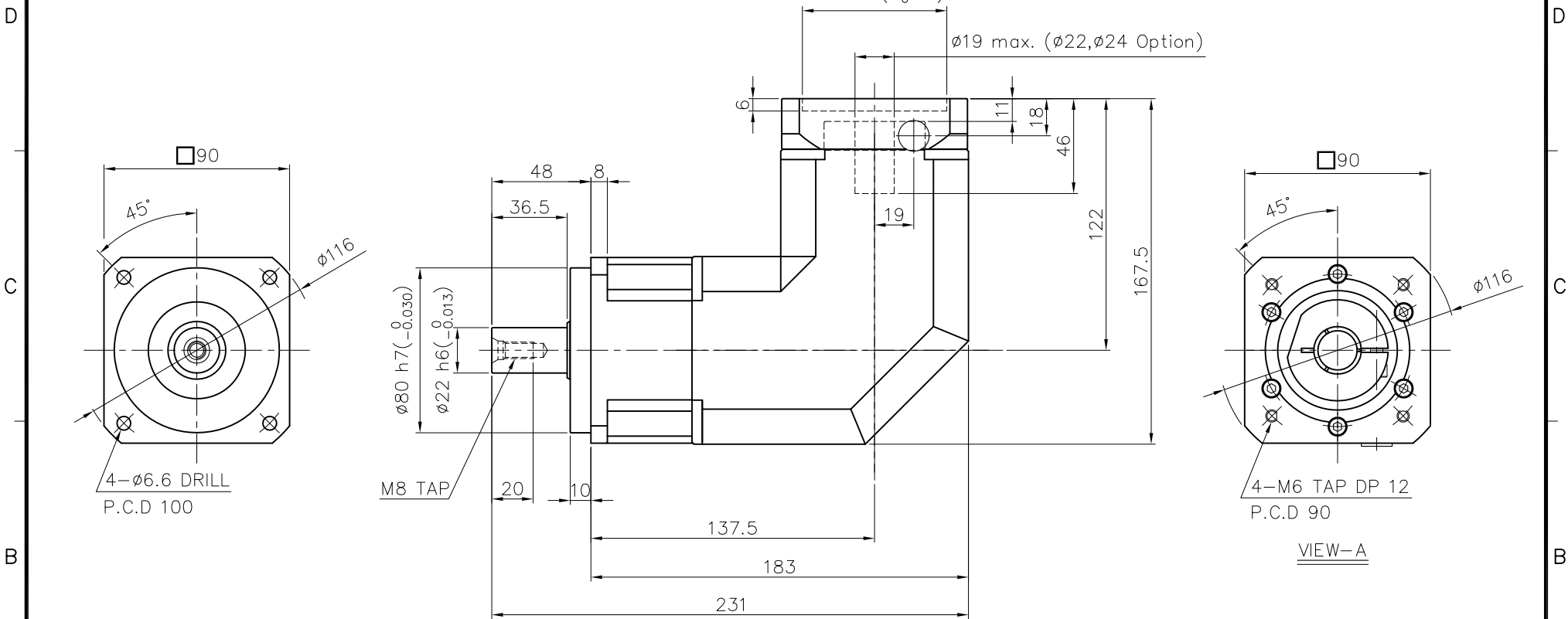
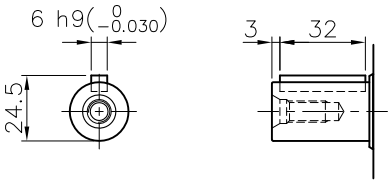


MARK	DATE	REVISION	REASON	SIGNATURE
------	------	----------	--------	-----------



SPECIFICATION

1. Reducer Stage : 1
2. Ratio : 1/3~1/20
3. Output Shaft Shape : Non-Key Type (S1)
Key Type (S2)
4. Backlash
 - 4-1) Precision Backlash P1(≤4 arcmin)
 - 4-2) Low Backlash P2(≤6 arcmin)
 - 4-3) Standard Backlash P3(≤10 arcmin)
5. Input Shaft Dia. : φ19 max. (φ22,φ24 option)
In case that motor shaft Dia. is smaller than φ19 or is φ22 Option
Bushing is supplied



Output Shaft of Key Type (S2-Option)

GENERAL TOLERANCE (mm)	SURFACE ROUGHNESS	- NPR - 090		φ116x231x167.5	-	1		
0.5~3 ±0.1	Ra Rmax FINISH MARK	NO.	DESCRIPTIONS	SIZE	MAT'L	Q'TY	WEIGHT (kgf)	REMARKS
3~6 ±0.1	✓ 100S	CUSTOMER				1 / 2	PROJECTION	
6~30 ±0.2	12.5/ 50S	TITLE		NPR-090(1/3~1/20)	DWG.NO.	NPR09000A1-090F	REV. NO.	
30~120 ±0.3	12.5/ 25S	DRAWN		S.R. JEON	CHECKED			0
120~400 ±0.5	12.5S	APPROVED		2018.08.15				
400~1000 ±0.8	6.3S 3.2S							
1000~2000 ±1.2	0.8S							
2000~4000 ±2	0.4S							

