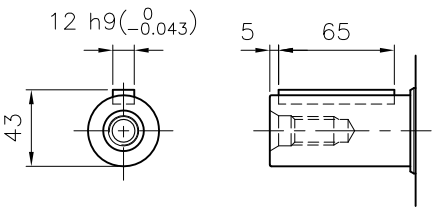


MARK	DATE	REVISION	REASON	SIGNATURE

SPECIFICATION

- 1.Reducer Stage : 1
- 2.Ratio : 1/3~1/20
- 3.Output Shaft Shape : Non-Key Type (S1)
Key Type (S2)
- 4.Backlash
 - 4-1) Precision Backlash P1(≤4 arcmin)
 - 4-2) Low Backlash P2(≤6 arcmin)
 - 4-3) Standard Backlash P3(≤10 arcmin)
- 5.Input Shaft Dia. : φ38 max.
In case that motor shaft Dia. is smaller than φ38
Bushing is supplied



Output Shaft of Key Type (S2-Option)

GENERAL TOLERANCE (mm)		SURFACE ROUGHNESS		NPR - 142		φ230x381.5x265.3		-		1		-	
0.5~3	±0.1	Ra	Rmax	NO.	DESCRIPTIONS	SIZE	MAT'L	Q'TY	WEIGHT (kgf)	REMARKS			
3~6	±0.1	✓	~	CUSTOMER	-	SCALE	1 / 3	PROJECTION					
6~30	±0.2	12.5	50S	TITLE	NPR-142(1/3~1/20)	DWG.NO.	NPR14200A1-180A	REV. NO.	0				
30~120	±0.3	12.5	25S	DRAWN		CHECKED		APPROVED					
120~400	±0.5	12.5S	12.5S	S.R.JEON		2018.08.28							
400~1000	±0.8	1.8	6.3S										
1000~2000	±1.2	0.8	3.2S										
2000~4000	±2	0.2	0.8S										
	±2	0.2	0.4S										