

6

5

4

3

2

1

DWG. NO.

MARK

DATE

REVISION

REASON

SIGNATURE

D

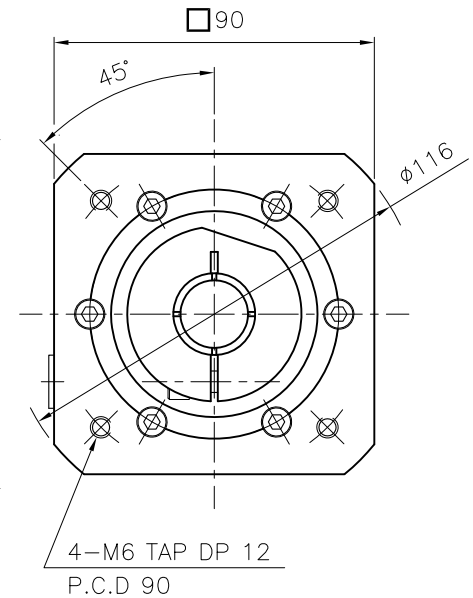
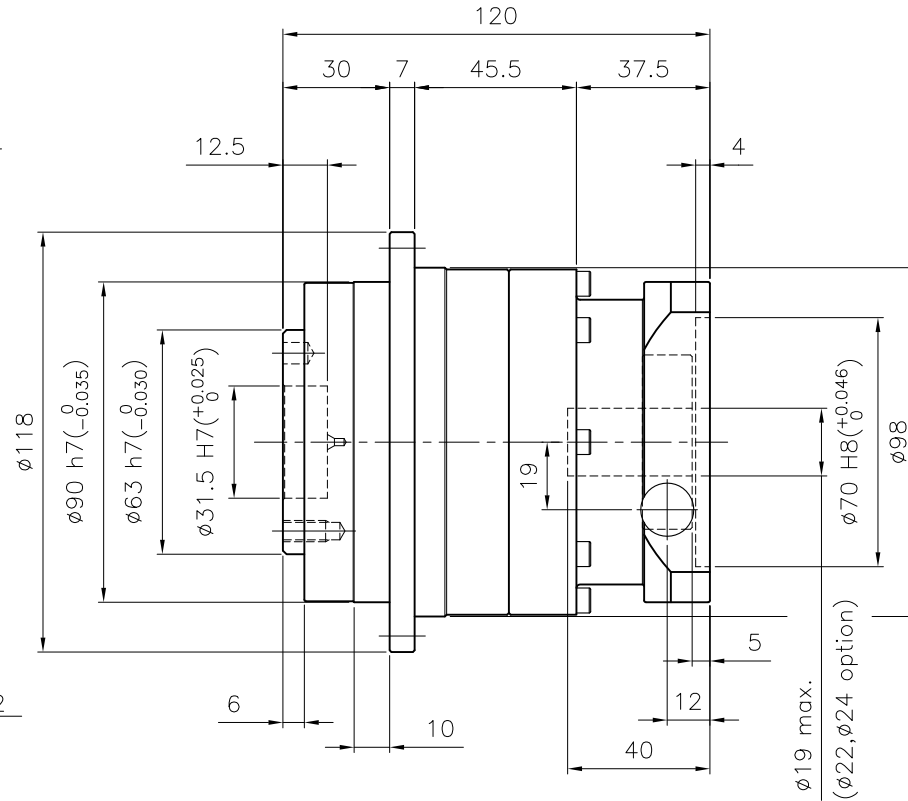
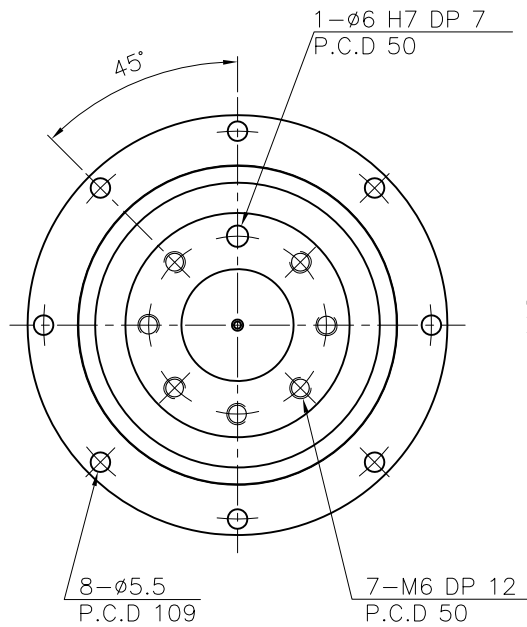
D

C

C

B

B



### SPECIFICATION

- 1.Reducer Stage : 1
- 2.Ratio : 1/4 , 1/5 , 1/7 , 1/10
- 3.Backlash
  - 3-1) Precision Backlash P1(≤3 arcmin)
  - 3-2) Low Backlash P2(≤5 arcmin)
  - 3-3) Standard Backlash P3(≤8 arcmin)
- 4.Input Shaft Dia. : ø19 max. (ø22,ø24 option)  
In case that motor shaft Dia. is smaller than ø19 or is ø22 Option  
Bushing is supplied

GENERAL TOLERANCE (mm)	SURFACE ROUGHNESS	NF-090		ø118x120		-		1		REMARKS	
0.5~3	±0.1	NO.	DESCRIPTIONS	SIZE	MAT'L	Q'TY	WEIGHT (kgf)	SCALE		PROJECTION	
3~6	±0.1	CUSTOMER	-			1 / 1.5		1 / 1.5		PROJECT	
6~30	±0.2	TITLE	NF-090(1/4~1/10)		DWG.NO.	NF09000A1-090B		REF.NO.		REV. NO.	
30~120	±0.3	Precision Planetary Gearhead								O	
120~400	±0.5	DRAWN	CHECKED	APPROVED							
400~1000	±0.8	S.R.JEON		2018.09.21							
1000~2000	±1.2	<b>NARA DRIVE</b>									
2000~4000	±2										

A

A

6

5

4

3

2

1