

6

5

4

3

2

1

DWG. NO.

MARK

DATE

REVISION

REASON

SIGNATURE

D

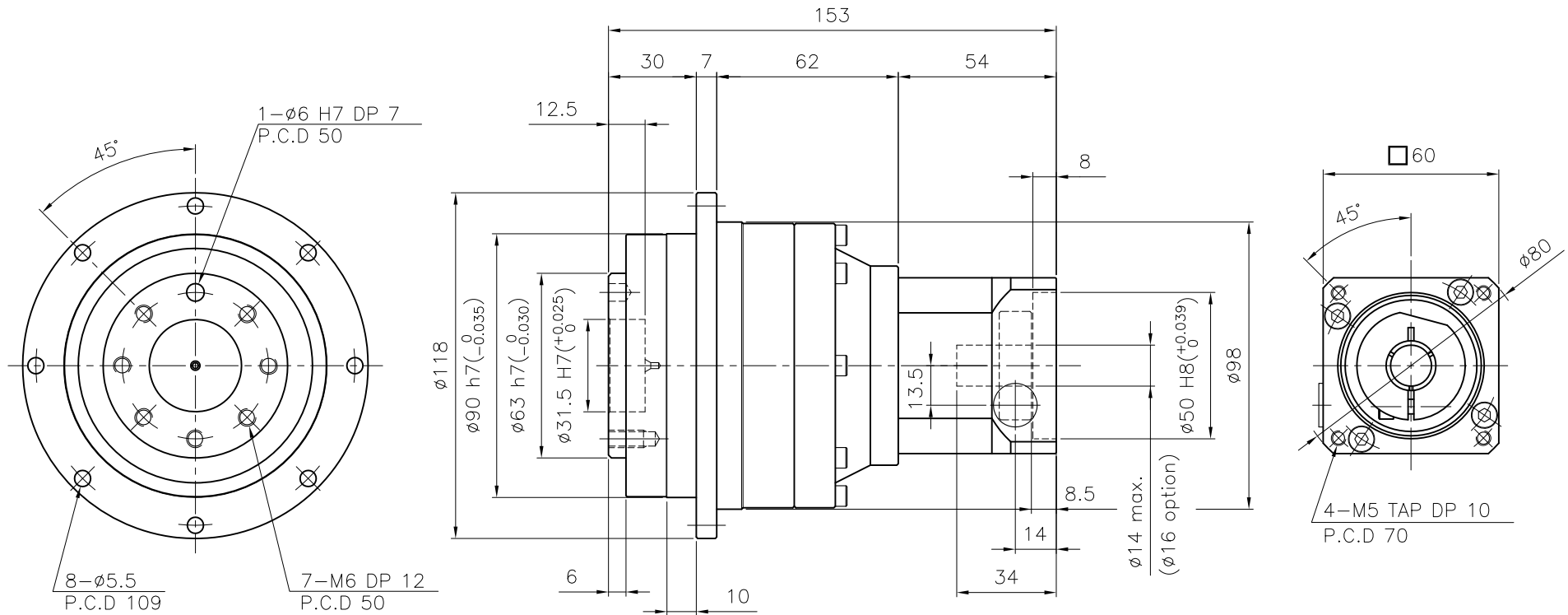
D

C

C

B

B



SPECIFICATION

- Reducer Stage : 2
- Ratio : 1/20 , 1/25 , 1/35 , 1/40 , 1/50 , 1/70 , 1/100
- Backlash
 - Precision Backlash P1(≤ 5 arcmin)
 - Low Backlash P2(≤ 7 arcmin)
 - Standard Backlash P3(≤ 10 arcmin)
- Input Shaft Dia. : $\phi 14$ max. ($\phi 16$ option)
In case that motor shaft Dia. is smaller than $\phi 14$
Bushing is supplied

A

A

GENERAL TOLERANCE (mm)	SURFACE ROUGHNESS	NF-090		$\phi 118 \times 153$		-		1		REMARKS	
0.5~3	± 0.1	NO.	DESCRIPTIONS	SIZE	MAT'L	Q'TY	WEIGHT (kgf)				
3~6	± 0.1	CUSTOMER	-		SCALE	1 / 1.5	PROJECTION				
6~30	± 0.2	TITLE	NF-090(1/20~1/100)		DWG.NO.	NF09000A2-060A		REV. NO.	0		
30~120	± 0.3	Precision Planetary Gearhead		REF.NO.							
120~400	± 0.5	DRAWN	CHECKED	APPROVED							
400~1000	± 0.8	S.R.JEON									
1000~2000	± 1.2	2018.09.21									
2000~4000	± 2										

NARA DRIVE

6

5

4

3

2

1