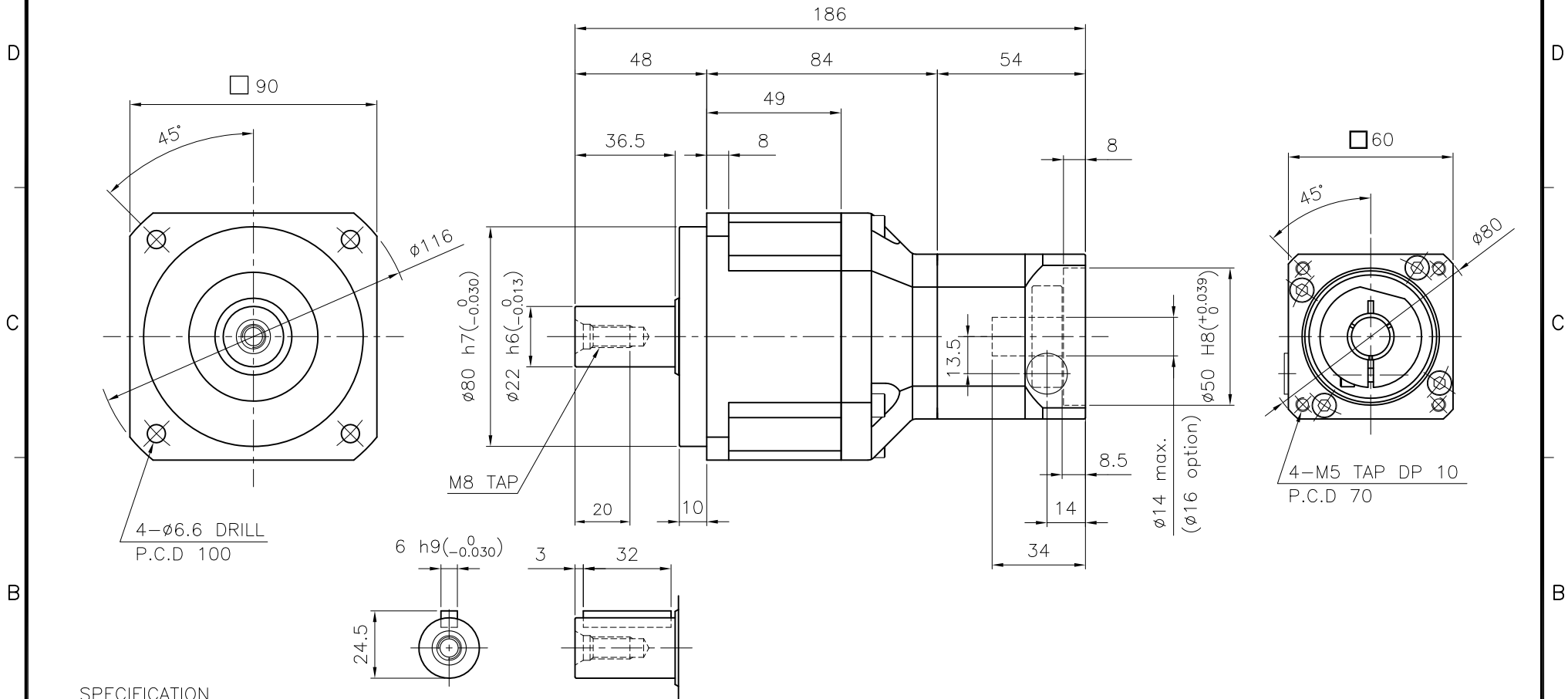


DWG. NO.

MARK	DATE	REVISION	REASON	SIGNATURE



SPECIFICATION

- Reducer Stage : 2
- Ratio : 1/15~1/100
- Output Shaft Shape : Non-Key Type (S1)  
Key Type (S2)
- Backlash  
4-1) Precision Backlash P1(≤5 arcmin)  
4-2) Low Backlash P2(≤7 arcmin)  
4-3) Standard Backlash P3(≤10 arcmin)
- Input Shaft Dia. :  $\phi 14$  max. ( $\phi 16$  option)  
In case that motor shaft Dia. is smaller than  $\phi 14$   
Bushing is supplied

Output Shaft of Key Type (S2-Option)

GENERAL TOLERANCE (mm)	SURFACE ROUGHNESS	-		NP-090	$\phi 116 \times 186$	-	1			
0.5~3	$\pm 0.1$	Ra	Rmax	NO.	DESCRIPTIONS	SIZE	MAT'L	Q'TY	WEIGHT (kgf)	REMARKS
3~6	$\pm 0.1$	$\sqrt{12.5}$	$\sim$	CUSTOMER	STANDARD	SCALE	1 / 1.5	PROJECTION		
6~30	$\pm 0.2$	$\sqrt{25}$	$\nabla$	TITLE	NP-090(1/15~1/100) Precision Planetary Gearhead	DWG. NO.	NP09000A2-060A	REV. NO.	0	
30~120	$\pm 0.3$	$\sqrt{50}$	$\nabla \nabla$	DRAWN	S.R. JEON	CHECKED		APPROVED		
120~400	$\pm 0.5$	$\sqrt{12.5}$	$\nabla \nabla \nabla$	2018.08.06						
400~1000	$\pm 0.8$	$\sqrt{6.3}$	$\nabla \nabla \nabla \nabla$							
1000~2000	$\pm 1.2$	$\sqrt{3.2}$	$\nabla \nabla \nabla \nabla \nabla$							
2000~4000	$\pm 2$	$\sqrt{0.8}$	$\nabla \nabla \nabla \nabla \nabla \nabla$							