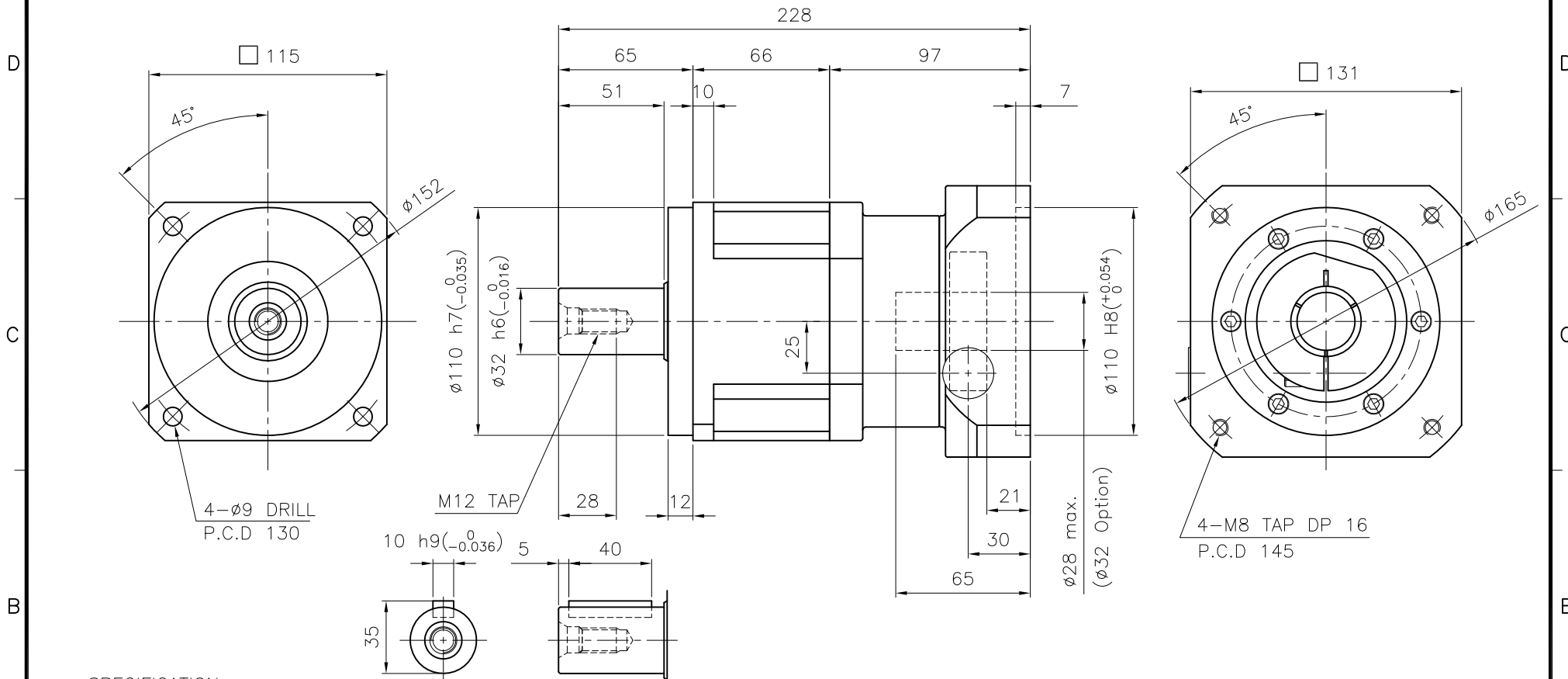


6 5 4 3 2 1

DWG. NO.

MARK	DATE	REVISION	REASON	SIGNATURE
------	------	----------	--------	-----------



SPECIFICATION

- 1.Reducer Stage : 1
- 2.Ratio : 1/3~1/10
- 3.Output Shaft Shape : Non-Key Type (S1)  
Key Type (S2)
- 4.Backlash
  - 4-1) Precision Backlash P1(≤3 arcmin)
  - 4-2) Low Backlash P2(≤5 arcmin)
  - 4-3) Standard Backlash P3(≤8 arcmin)
- 5.Input Shaft Dia. : ø28 max. (ø32 option)  
In case that motor shaft Dia. is smaller than ø28  
Bushing is supplied

Output Shaft of Key Type (S2-Option)

GENERAL TOLERANCE (mm)	SURFACE ROUGHNESS		- NP-115 ø165x228		-	1				
0.5~3 ±0.1	Ra	Rmax	FINISH MARK	NO.	DESCRIPTIONS	SIZE	MAT'L	Q'TY	WEIGHT (kgf)	REMARKS
3~6 ±0.1	✓	~	~	CUSTOMER	STANDARD		SCALE	1 / 2	PROJECTION	⊕
6~30 ±0.2	100S	50S	25S	TITLE	NP-115(1/3~1/10)		DWG.NO.	NP11500A1-130A		REV. NO.
30~120 ±0.3	12.5	12.5S	12.5S	Precision Planetary Gearhead		REF.NO.			0	
120~400 ±0.5	6.3S	3.2S	0.8S	DRAWN	CHECKED	APPROVED				
400~1000 ±0.8	3.2S	0.8S	0.4S	S.R.JEON				<b>NARA DRIVE</b>		
1000~2000 ±1.2	0.8S	0.4S	0.2S	2018.08.10						
2000~4000 ±2	0.4S	0.2S	0.1S							

6 5 4 3 2 1