

6

5

4

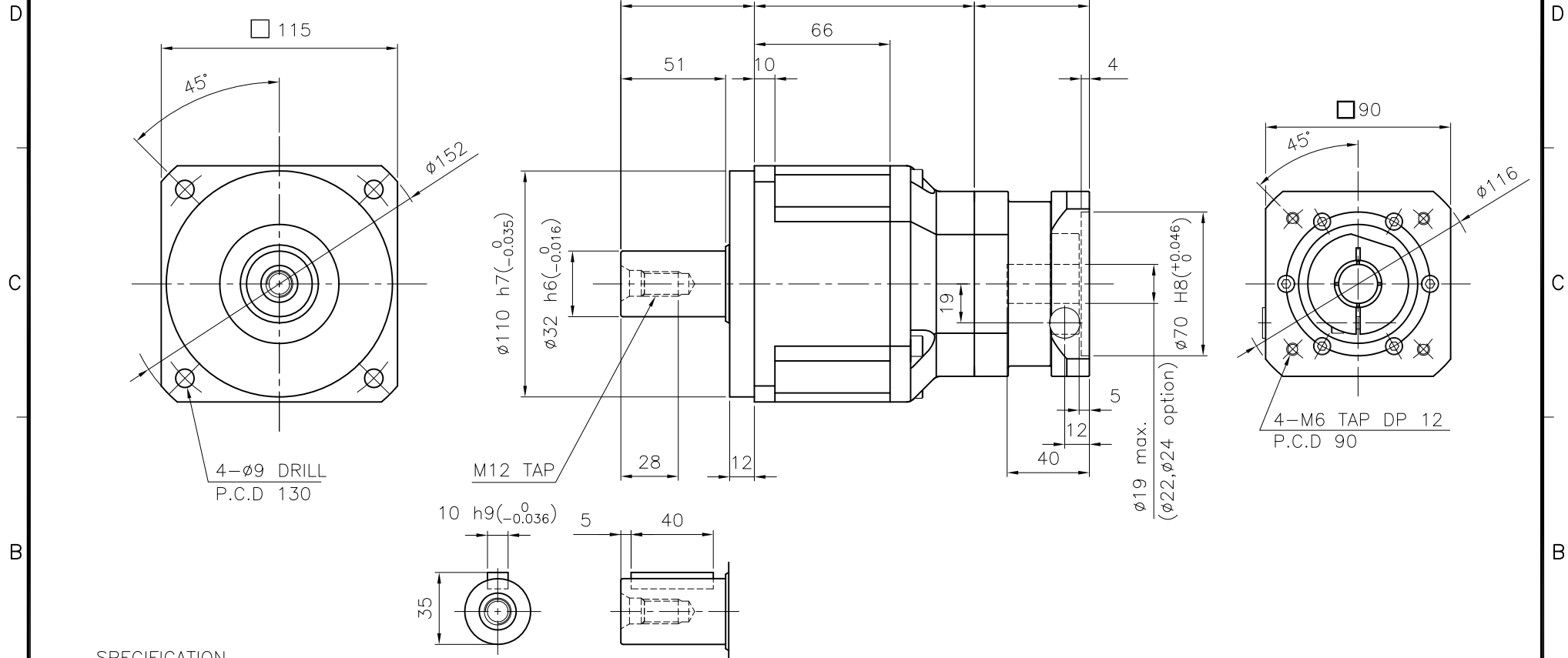
3

2

1

DWG. NO.

MARK	DATE	REVISION	REASON	SIGNATURE



SPECIFICATION

- Reducer Stage : 2
- Ratio : 1/15~1/100
- Output Shaft Shape : Non-Key Type (S1)
Key Type (S2)
- Backlash
 - 4-1) Precision Backlash P1(≤5 arcmin)
 - 4-2) Low Backlash P2(≤7 arcmin)
 - 4-3) Standard Backlash P3(≤10 arcmin)
- Input Shaft Dia. : $\phi 19$ max. ($\phi 22, \phi 24$ option)
In case that motor shaft Dia. is smaller than $\phi 19$ or is $\phi 22$ Option Bushing is supplied

Output Shaft of Key Type (S2-Option)

GENERAL TOLERANCE (mm)	SURFACE ROUGHNESS		FINISH MARK		NO.		DESCRIPTIONS		SIZE	MAT'L	Q'TY	WEIGHT (kgf)	REMARKS
0.5~3	±0.1	Ra	Rmax	~	-		NP-115		$\phi 152 \times 228$	-	1		
3~6	±0.1	✓	~	~	NO.		DESCRIPTIONS		SIZE	MAT'L	Q'TY	WEIGHT (kgf)	REMARKS
6~30	±0.2	12.5	50S	▽	CUSTOMER		STANDARD		SCALE	1 / 2	PROJECTION	⊕	
30~120	±0.3	6.3	25S	▽▽	TITLE		NP-115(1/15~1/100)		DWG.NO.	NP11500A2-090B	REV. NO.	0	
120~400	±0.5	3.2	12.5S	▽▽▽	DRAWN		CHECKED	APPROVED	REF.NO.				
400~1000	±0.8	1.6	6.3S	▽▽▽▽	S.R.JEON								
1000~2000	±1.2	0.8	3.2S	▽▽▽▽▽	2018.08.10								
2000~4000	±2	0.4	1.6S	▽▽▽▽▽▽									

NARADrive