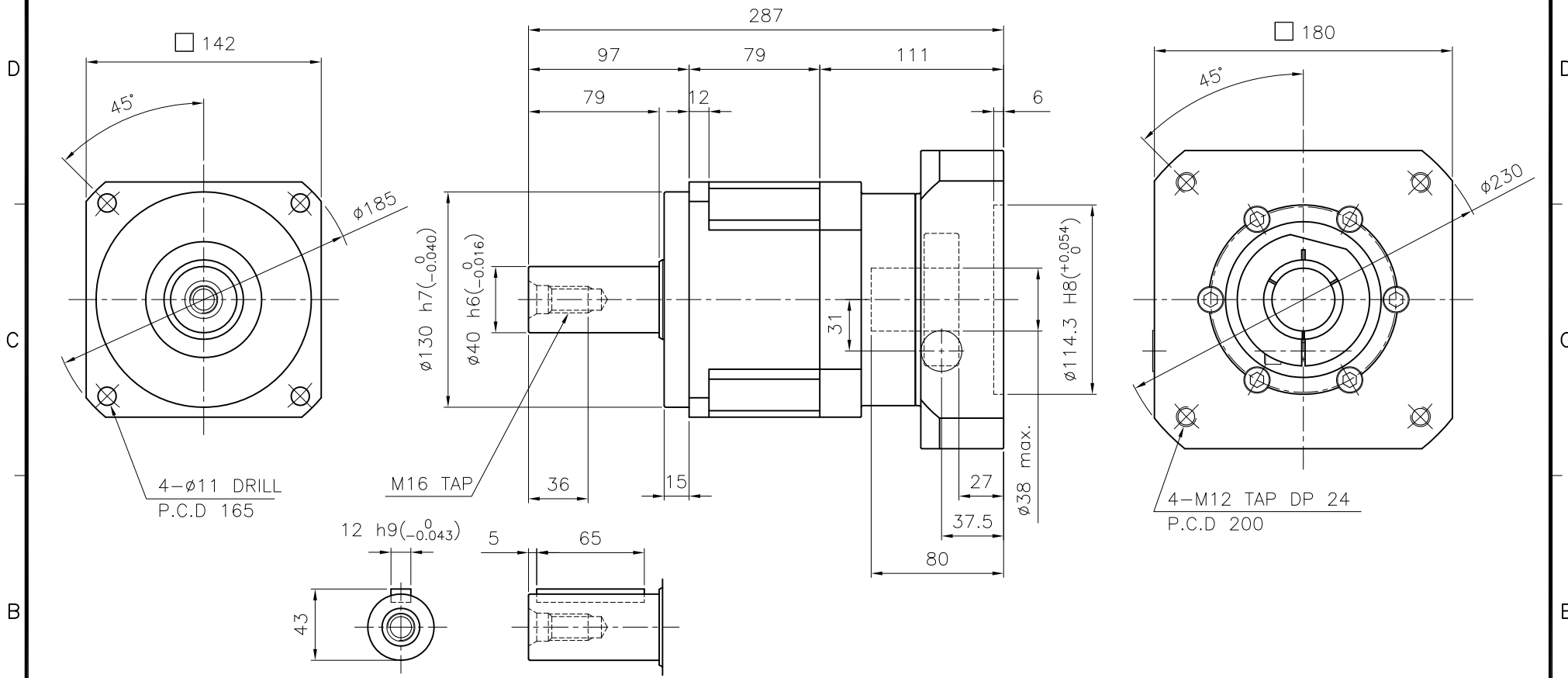


MARK	DATE	REVISION	REASON	SIGNATURE



SPECIFICATION

Output Shaft of Key Type (S2-Option)

- Reducer Stage : 1
- Ratio : 1/3~1/10
- Output Shaft Shape : Non-Key Type (S1)
Key Type (S2)
- Backlash
 - 4-1) Precision Backlash P1(≤ 3 arcmin)
 - 4-2) Low Backlash P2(≤ 5 arcmin)
 - 4-3) Standard Backlash P3(≤ 8 arcmin)
- Input Shaft Dia. : $\phi 38$ max.
In case that motor shaft Dia. is smaller than $\phi 38$
Bushing is supplied

GENERAL TOLERANCE (mm)	SURFACE ROUGHNESS	- NP-142		$\phi 230 \times 287$		-	1		
0.5~3	Ra	Rmax	FINISH MARK	NO.	DESCRIPTIONS	SIZE	MAT'L	Q'TY	WEIGHT (kgf)
3~6	\checkmark	\checkmark	\sim	CUSTOMER	STANDARD	SCALE	1 / 2.5	PROJECTION	$\rightarrow \oplus$
6~30	$\frac{12.5}{\nabla}$	100S	∇	TITLE	NP-142(1/3~1/10)	DWG.NO.	NP14200A1-180A	REV. NO.	0
30~120	$\frac{6.3}{\nabla}$	50S	∇	Precision Planetary Gearhead		REF.NO.			
120~400	$\frac{3.2}{\nabla}$	25S	∇	DRAWN	CHECKED	APPROVED			
400~1000	$\frac{1.6}{\nabla}$	12.5S	∇	S.R.JEON					
1000~2000	$\frac{0.8}{\nabla}$	6.3S	∇	2018.08.11					
2000~4000	$\frac{0.4}{\nabla}$	3.2S	∇						

