

6

5

4

3

2

1

DWG. NO.

MARK	DATE	REVISION	REASON	SIGNATURE
------	------	----------	--------	-----------

D

C

B

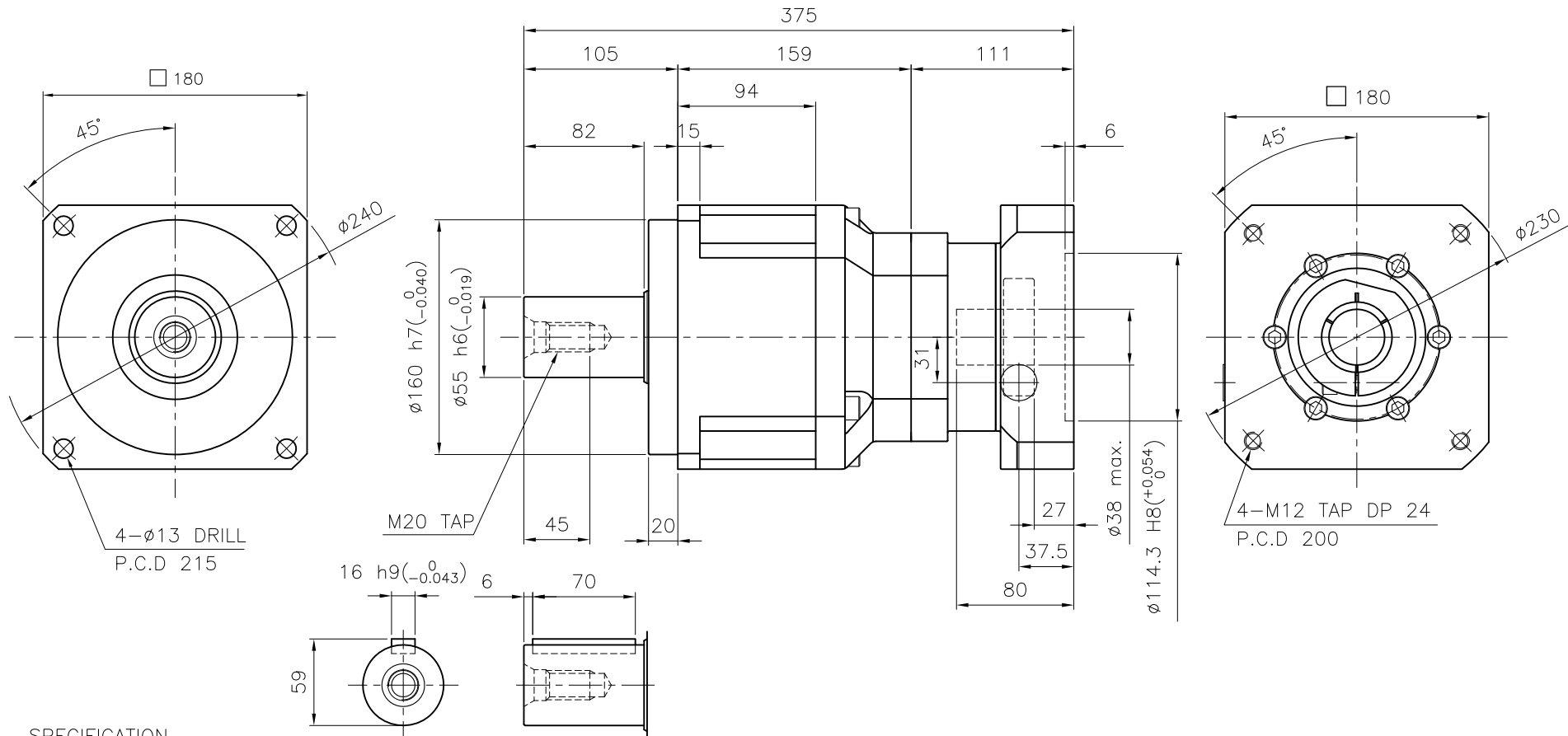
A

D

C

B

A



SPECIFICATION

- 1.Reducer Stage : 2
- 2.Ratio : 1/15~1/100
- 3.Output Shaft Shape : Non-Key Type (S1)
Key Type (S2)
- 4.Backlash
 - 4-1) Precision Backlash P1(≤ 5 arcmin)
 - 4-2) Low Backlash P2(≤ 7 arcmin)
 - 4-3) Standard Backlash P3(≤ 10 arcmin)
- 5.Input Shaft Dia. : $\phi 38$ max.
In case that motor shaft Dia. is smaller than $\phi 38$
Bushing is supplied

Output Shaft of Key Type (S2-Option)

GENERAL TOLERANCE (mm)	SURFACE ROUGHNESS	-		NP-180	$\phi 240 \times 375$	-	1			
0.5~3	± 0.1	Ra	Rmax	NO.	DESCRIPTIONS	SIZE	MAT'L	Q'TY	WEIGHT (kgf)	REMARKS
3~6	± 0.1	$\sqrt{12.5}$	\sim	CUSTOMER	STANDARD	SCALE	1 / 3	PROJECTION		
6~30	± 0.2	$\sqrt{6.3}$	∇	TITLE	NP-180(1/15~1/100)	DWG.NO.	NP18000A2-180A	REV. NO.	0	
30~120	± 0.3	$\sqrt{3.2}$	$\nabla \nabla$	DRAWN		CHECKED	APPROVED			
120~400	± 0.5	$\sqrt{1.6}$	$\nabla \nabla \nabla$	S.R.JEON						
400~1000	± 0.8	$\sqrt{0.8}$	$\nabla \nabla \nabla \nabla$	2018.08.11						
1000~2000	± 1.2	$\sqrt{0.4}$	$\nabla \nabla \nabla \nabla \nabla$							
2000~4000	± 2	$\sqrt{0.2}$	$\nabla \nabla \nabla \nabla \nabla \nabla$							

