

6

5

4

3

2

1

DWG. NO.

MARK	DATE	REVISION	REASON	SIGNATURE

D

D

C

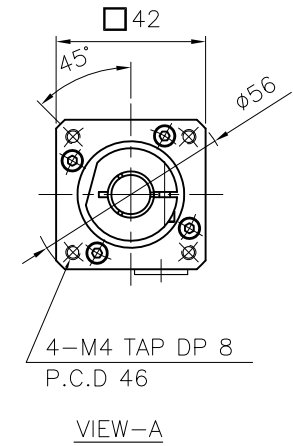
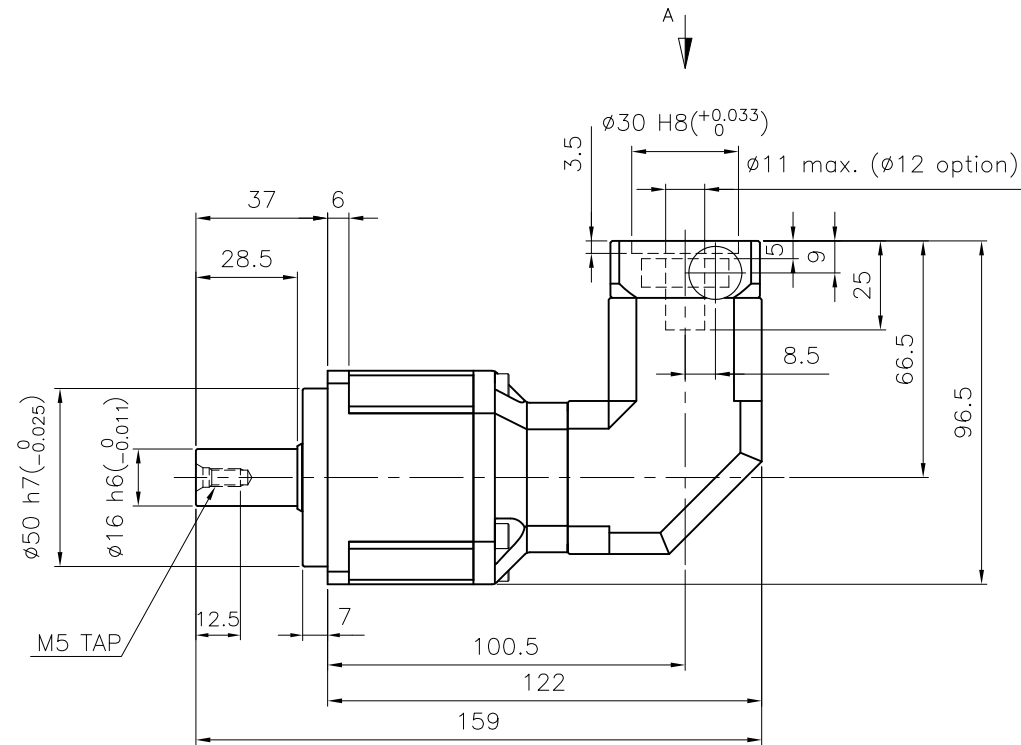
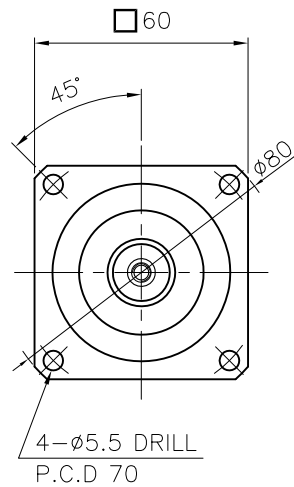
C

B

B

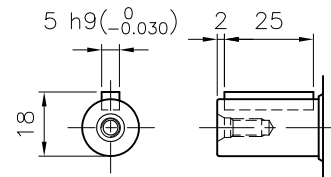
A

A



### SPECIFICATION

- Reducer Stage : 2
- Ratio : 1/25~1/200
- Output Shaft Shape : Non-Key Type (S1)  
Key Type (S2)
- Backlash
  - Precision Backlash P1(≤7 arcmin)
  - Low Backlash P2(≤9 arcmin)
  - Standard Backlash P3(≤12 arcmin)
- Input Shaft Dia. : Ø11 max. (Ø12 option)  
In case that motor shaft Dia. is smaller than Ø11  
Bushing is supplied



Output Shaft of Key Type (S2-Option)

GENERAL TOLERANCE (mm)	SURFACE ROUGHNESS	FINISH MARK	NPR - 060		Ø80x159x96.5	-	1	REMARKS		
0.5~3	±0.1	✓	NO.	DESCRIPTIONS	SIZE	MAT'L	Q'TY	WEIGHT (kgf)	REMARKS	
3~6	±0.1	✓	CUSTOMER		-	SCALE	1 / 1.5	PROJECTION	⊕	
6~30	±0.2	✓	TITLE		NPR-060(1/25~1/200)	DWG.NO.	NPRO6000A2-042A	REV. NO.	0	
30~120	±0.3	✓	DRAWN		S.R.JEON	CHECKED	APPROVED			
120~400	±0.5	✓	DATE		2018.08.13					
400~1000	±0.8	✓								
1000~2000	±1.2	✓								
2000~4000	±2	✓								

6

5

4

3

2

1