

6

5

4

3

2

1

DWG. NO.

MARK	DATE	REVISION	REASON	SIGNATURE

D

D

C

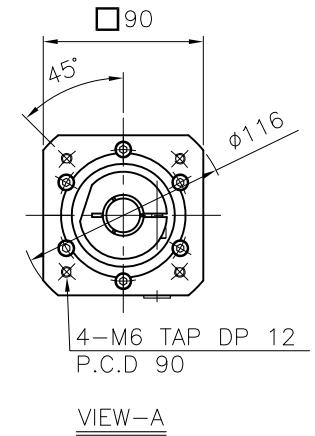
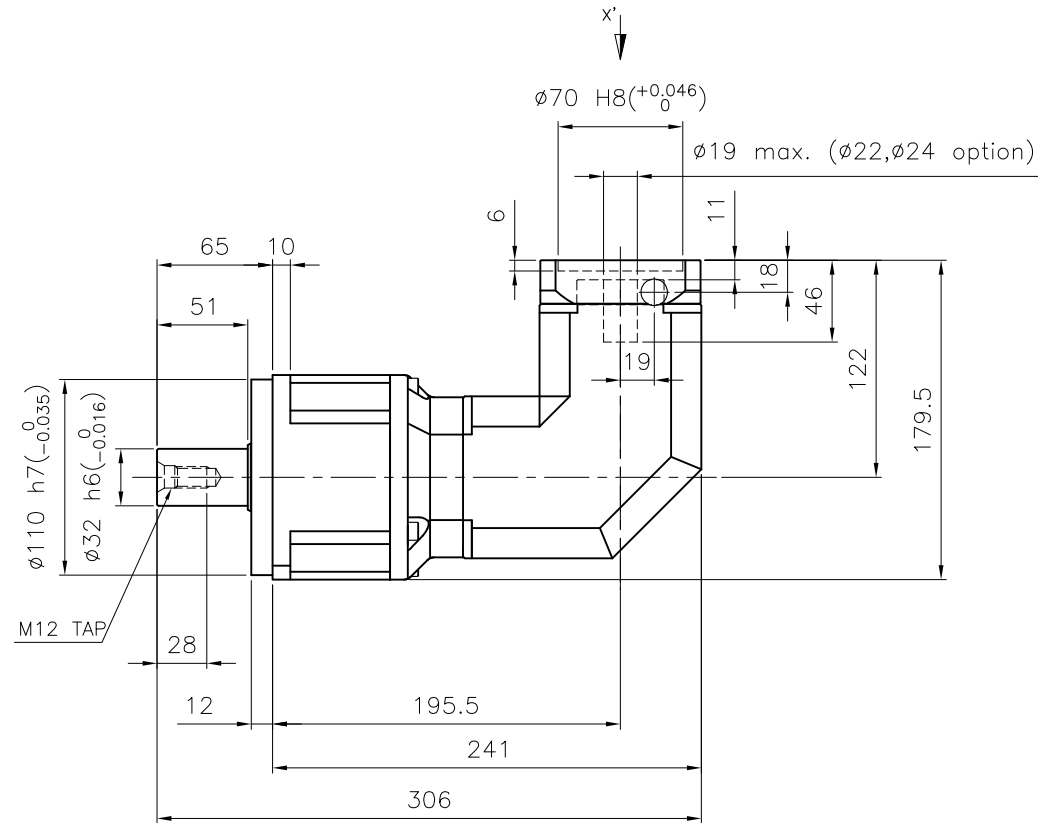
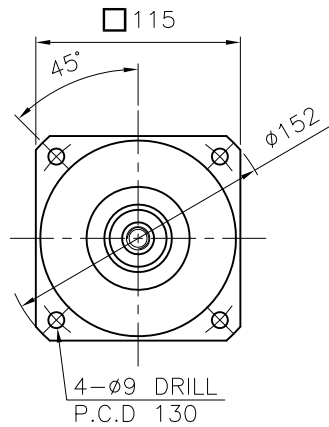
C

B

B

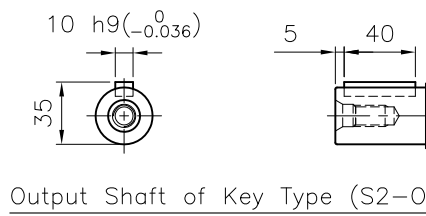
A

A



SPECIFICATION

- Reducer Stage : 2
- Ratio : 1/25~1/200
- Output Shaft Shape : Non-Key Type (S1)
Key Type (S2)
- Backlash
 - 4-1) Precision Backlash P1(≤7 arcmin)
 - 4-2) Low Backlash P2(≤9 arcmin)
 - 4-3) Standard Backlash P3(≤12 arcmin)
- Input Shaft Dia. : φ19 max. (φ22, φ24 option)
In case that motor shaft Dia. is smaller than φ19 or is φ22 option
Bushing is supplied



GENERAL TOLERANCE (mm)	SURFACE ROUGHNESS	FINISH MARK	NPR - 115		φ152x306x179.5		-		1		REMARKS	
0.5~3	±0.1	~	NO.	DESCRIPTIONS	SIZE	MAT'L	Q'TY	WEIGHT (kgf)	SCALE			PROJECTION
3~6	±0.1	✓	CUSTOMER									
6~30	±0.2	12.5	TITLE									
30~120	±0.3	6.3	NPR-115(1/25~1/200)									
120~400	±0.5	3.2	Precision Planetary Gearhead									
400~1000	±0.8	1.6	DRAWN									
1000~2000	±1.2	0.8	CHECKED									
2000~4000	±2	0.4	APPROVED									
			S.R. JEON		2018.08.18							

NARA DRIVE

6

5

4

3

2

1